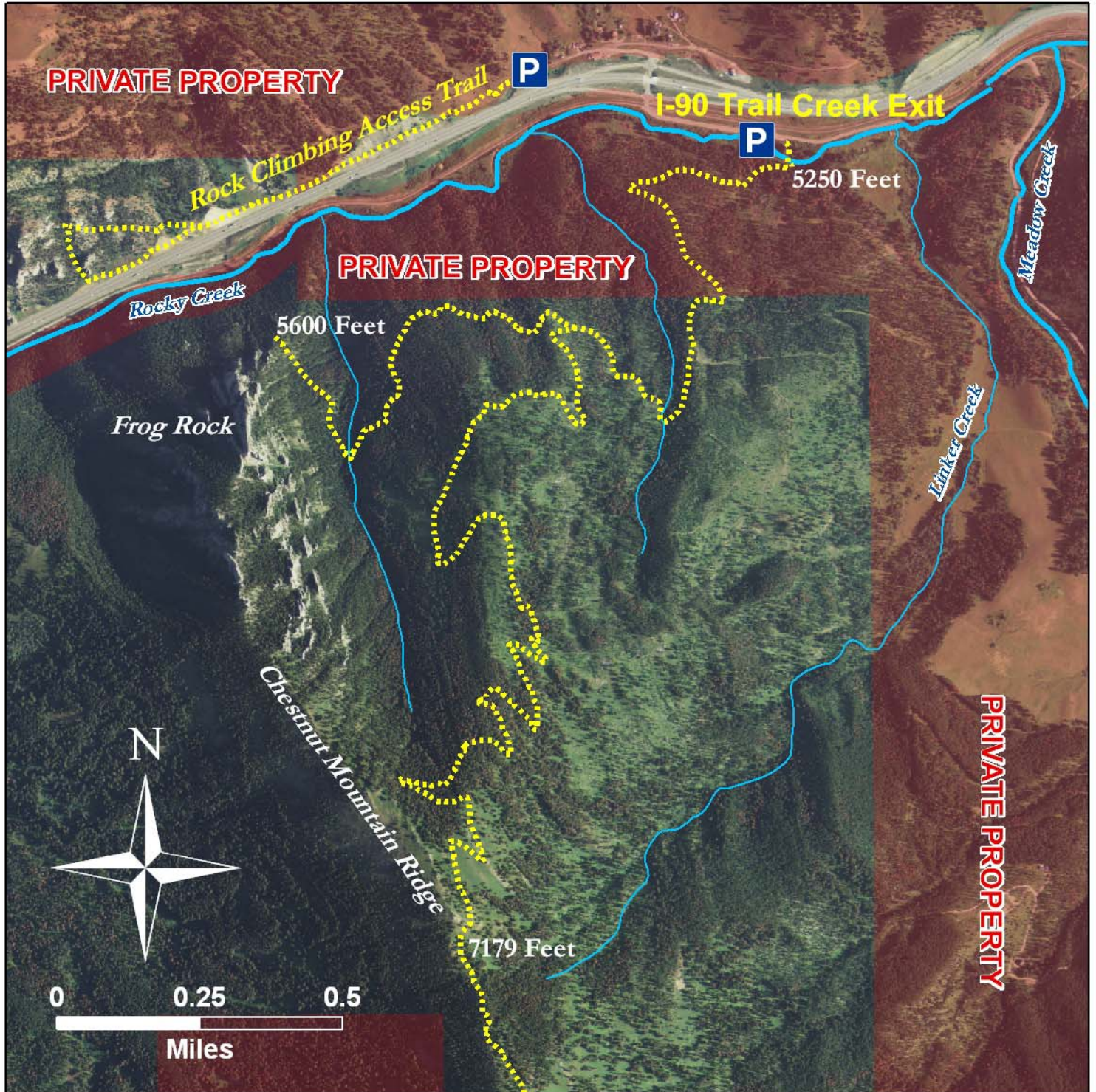


Chestnut Mountain Trail

Open to all Non-Motorized Users



Chestnut Mountain Trail

Just 10 minutes from downtown Bozeman, south of I-90 off the Trail Creek exit, the Chestnut Mountain Trail climbs 2200 feet in 4.6 miles past the spectacular Frog Rock pinnacles to the ridge of Chestnut Mountain. At 1.2 miles, a one-mile spur trail traverses west providing climbing access and a spectacular hike or bike ride to the base of Frog Rock.

Chestnut Mountain Trail starts with a bridge across Rocky Creek, just 0.2 miles from the I-90 Trail Creek off-ramp. Parking is on the shoulder of the road. At 0.8 miles, the trail intersects an old logging road which it follows for the next 1.2 miles with dramatic views of the Frog Rock pinnacles. From the end of the logging road, new single track climbs steadily through forest and fields of wildflowers onto the ridge which can be followed all the way to the back of Bear Canyon. From start to finish, the trail's sustained grades demand good fitness – especially on a mountain bike.



Photograph by Ryan Krueger, Outside Bozeman Magazine

Trails & Conservation

Over the span of ten years GVLT, the Trust for Public Land (TPL), Gallatin National Forest, Gallatin County, Montana Outdoor Science School (MOSS), Southwest Montana Climbers Coalition (SMCC) worked together to create these trails and at the same time conserve a critically important link in the Bozeman Pass wildlife corridor. The entire project was made possible by the Schmidt family, who worked with GVLT, TPL and Gallatin National Forest to conserve 2,055 acres of their land straddling I-90. A conservation easement permanently protects 1,240 acres of the Schmidt property north of I-90, and

another 815 acres are now public land. The new public land includes the popular climbing area north of I-90, and 640 acres south of I-90 over which most of the new trails were constructed. Land conservation funding came from Gallatin County Open Space Bonds and the federal Land and Water Conservation Fund. Gallatin National Forest designed and funded the new Chestnut Mountain Trail and partnered with SMCC to build the Frog Rock spur trail.

Please Respect Private Property

The first 0.6 miles of trail cross private property protected by GVLT's first conservation easement in 1991. This section of trail follows a trail easement granted by MOSS when they owned the property in the mid-2000's. Please respect this private property. Travel off-trail, motorized use, hunting, camping and fires are not allowed.

Gallatin Valley Land Trust ~ PO Box 7021 ~ Bozeman, MT 59771 ~ 587-8404

I would like support GVLT's trails and conservation work!

\$1,000 \$500 \$250 \$100 \$35 Other _____

Name _____ Address _____ City, State, Zip _____

Phone _____ Email* _____

* I would like to receive: GVLT's monthly eNews Volunteer opportunities (GVLT will not share your email!)

Please make checks payable to GVLT. Secure credit card donations can be made online at: www.gvlt.org

GVLT is a nonprofit 501(c)(3) organization. Your contribution is tax-deductible.